

RPM215

Two Stage Loader-Mounted Snow Blower

- ▶ Up to 1,300 tons/hour
- ▶ Tier 4 Stage 5 Diesel engine
- ▶ Reliable, high-performance transmission
- ▶ Suitable for Backhoes
- ▶ Heavy-duty construction



Actual product may vary from photos due to continuous product enhancements.



Uncompromising Performance and Reliability

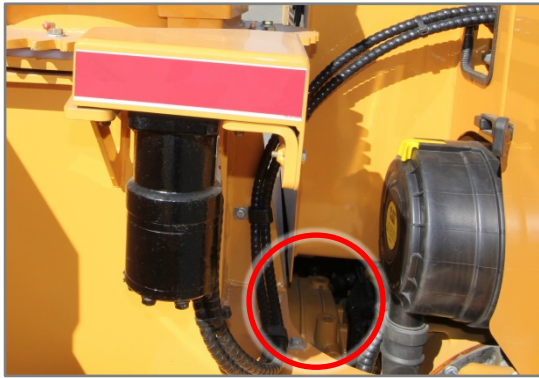
The RPM215 is a two phase loader-mounted snow blower for backhoes, swing loader, and compact size wheel loaders. This self-contained model provides surprising performance in a reduced format.

The RPM215 is equipped with an efficient powertrain providing an appreciable snow-clearing rate of 1,300 tons/hour. The high-performance transmission system is designed to use the Stage 5 engine's full power while minimizing energy losses and maintenance.

A Vigorous Engine

The RPM215 is powered by a 90 kW (121 hp) Tier 4 Stage 5 Diesel engine equipped with particle post-treatment technology allowing fast engine recovery.

- Great performance
- Fuel efficient
- Quiet



A High-Performance Transmission

Designed with as few components as possible, the RPM215 transmission is very reliable and transfers maximum power from the engine. The transmission includes a single gearbox, which minimizes energy loss. Most blowers on the market have as many as three gearboxes and thus require a more powerful engine to compensate for performance.

- Highly reliable
- Optimal power transfer
- Fewer critical parts
- Low maintenance costs



Belt Drive System

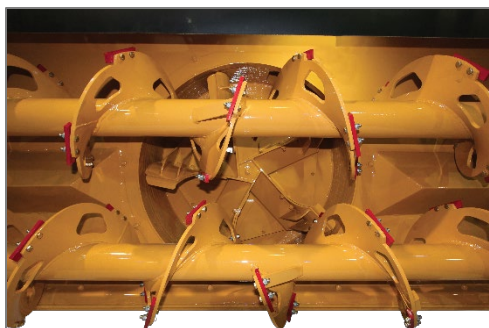
The RPM215 belt drive system provides many advantages over a chain drive as well as greater shock resistance.

- Transfers up to 98% of engine power
- Longer service life
- No oil bath
- No risk of leaks
- Reduces replacement of shear bolts
- Minimizes interruptions and down time

RPM215



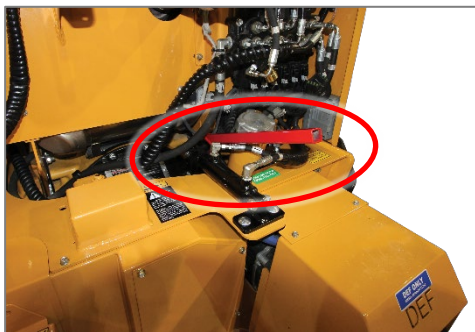
The illustrated RPM215 is equipped with bolted ice breakers on augers



An Effective Impeller

With its large impeller casing featuring an unrestricted intake, more snow is fed to the impeller blades thus better productivity.

- Blows a higher volume of snow
- Makes full use of engine power



Emergency Clutch Engagement

In the event of a clutch failure, a lever allows for its manual activation to let you finish the job.



Intuitive Operation

The large display screen gives the operator a fast read of the blower's operating parameters. An easy-to-use joystick controls all functions.



The Most Rugged Frame

The triangular frame design composed of two (2) oversize beams on each side, maintains the structure integrity during hard work and makes it more resistant to impacts. RPM Tech's snow blowers are built to last!



Easy Maintenance

The tilt-up engine cowling, swing doors grease zerks, and well-thought-out mechanical design provide easy access to main components or parts requiring regular maintenance, such as:

- Oil and fuel filters
- Hydraulic oil tank
- Radiator
- Shear bolts

The RPM215 is ideal for:

- Municipalities
- Snow removal contractors
- Regional airports
- Railway companies

RPM Tech Advantages

- Proven reliability and service life
- Designed for extended periods of hard use
- Heavy-duty construction resists deformation
- Engine application certified by Caterpillar®
- Weather-resistant electrical components
- Renowned brand for more than 55 years

Summary Technical Specifications – RPM215

Up to 1,300 tons/hour capacity¹

Casting¹: Up to 46 m (150 ft)

Clears fresh, heavy, and hard-packed snow

DIMENSIONS

- Cutting width: 2591 mm (102 in.)
- Overall height: 3277 mm (129 ½ in.) with telescopic chute retracted
- Overall length: 1956 mm (77 in.) without optional fixed steering vanes and without female coupler
- Working height: 1071 mm (42 in.)
- Weight : 2540 kg (5600 lb) approx. with fuel and DEF tanks full and without female coupler

AUGERS

- Two (2) interchangeable 381 mm (15 in.) diameter open flight augers welded in one piece

IMPELLER AND IMPELLER CASING

- 851 mm (33 ½ in.) diameter impeller
- Five (5) bolted concave blades
- Impeller casing :
 - Inside diameter : 867 mm (34 ¼ in.)
 - Intake diameter : 851 mm (33 ½ in.)
 - Depth : 321 mm (12 ⅝ in.)
 - Actuated by an hydraulic cylinder
 - 45° rotation to the right for side casting
- Casting¹: Up to 46 m (150 ft)

TELESCOPIC CHUTE

- Adjustable height from 3277 to 4064 mm (129 ½ to 160 ¾ in.)
- Extension : 812 mm (32 in.) hydraulically activated
- Rotation : 282°
- Casting¹: From 1 to 12 m (3 to 40 ft)

ENGINE

- Certified 90 kW (121 hp) C3.6 Caterpillar® Tier 4 Stage 5, turbocharged Diesel engine
- Winter starting aid: 600 W block heater and glow plugs

TRANSMISSION

- Belt transmission system with no oil bath
- One (1) gear box
- One (1) driveshaft
- Two (2) sets of shear bolt protect the gear box and the auger drive.

CLUTCH

- Twin Disc® make, hydraulically activated
- Accessible greasing system

FUEL TANK

- 82 L (22 gal) steel tank with gauge

CHASSIS

- Fully welded sturdy steel construction

STEERING VANES (OPTIONAL)

- Height : 1289 mm (50 ¾ in.); other height on demand
- Cutting width : 2794 mm (110 in.)

ELECTRICAL SYSTEM

- Sealed 12 V, 115 A alternator
- One (1) maintenance-free 31 1060 CCA battery

CONTROLS AND INSTRUMENTATION

- Heavy-duty Sauer Danfoss PLUS+1 control system
- High resolution LCD grayscale display screen
- Joystick with integrated functions

SKATES AND SCRAPER BLADES

- Four (4) steel skates covering 645 cm² (100 in²)
- Two (2) 44W steel reversible scraper blades

INCLUDED ACCESSORIES

- Wireless remote control system
- Bolted ice breakers
- Radiator blanket
- LED chute lights
- DEF tank heated blanket

OPTIONAL EQUIPMENT (SHORT LIST)

- Trimay® impeller casing and/or chute
- Work lights on the blower (LED or Halogen)
- Arctic lubrication kit for constant operation below -25°C (-13°F)
- Battery and/or hydraulic oil heater
- High hydraulic oil temperature protection
- Female quick attach system
- Color display screen

¹ Depending on snow conditions

RPM Tech reserves the right to modify or discontinue any design, specifications, characteristics, model, or accessory without notice.

Contact your representative for full details



A Trademark of Tenco Inc.

Sales Office
Laval, QC Canada

Tel.: **+1.450.687.3280**
1.800.631.9297
(North America)

info@rpmtechgroup.com