

# RPM48R

## Two Stage Loader-Mounted Snow Blower

- ▶ Up to 5,000 tons/hour
- ▶ High-speed ribbon type
- ▶ High-performance transmission
- ▶ Powerful engine
- ▶ Heavy-duty construction



Watch Video



RPM48R featuring the optional truck loading chute.  
Actual product may vary from photos due to continuous product enhancement.



## High Capacity and Speed

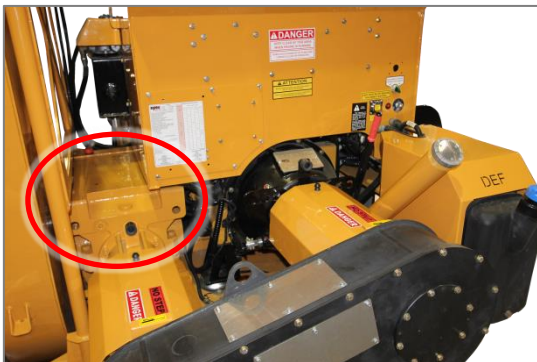
The RPM48R is a two phase, ribbon type snow blower providing an outstanding snow-clearing capacity of 5,000 tons/hour. With its 1219 mm (48 in.) diameter ribbon and oversized impeller, the RPM48R can easily manage large snowfalls and major snow accumulations. This self-contained model is designed to be front-end mounted on a large size loader.

The RPM48R is equipped with an efficient and rugged powertrain. The high-performance transmission system is designed to use maximum engine's power while minimizing energy losses and maintenance.

## A Powerful Engine

The RPM48R is powered by a 388 kW (520 hp) Tier 4 Final Diesel engine equipped with particle post-treatment technology allowing fast engine recovery.

- Uncompromising performance
- Fuel efficient
- Quiet



## A High-Performance Transmission

Engineered with as few components as possible, the RPM48R transmission is dependable and transfers maximum power from the engine allowing an outstanding snow-clearing capacity of 5,000 tons/hour. The transmission relies on an oversized industrial gearbox, withstanding hard work and minimizing energy losses.

- Highly reliable
- Optimal power transfer
- Reduce spare parts dependency
- Lower maintenance costs

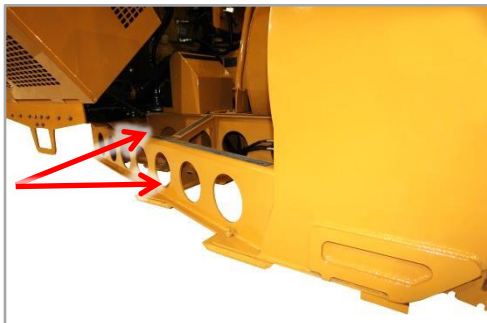


## Belt Drive System

The RPM48R belt drive system provides many advantages over a chain drive as well as greater shock resistance.

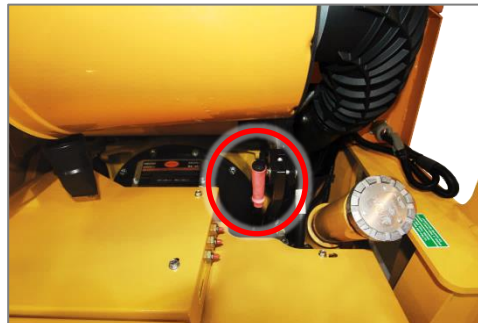
- Transfers up to 98% of engine power
- Longer service life
- No oil bath
- No risk of leaks
- Reduces replacement of shear bolts
- Minimizes interruptions and down time





### The Most Rugged Frame

The triangular frame design composed of two (2) oversized beams on each side, maintains the structure integrity during hard work and makes it more resistant to impacts. RPM Tech's snow blowers are built to last!



### Emergency Clutch Engagement

In the event of a clutch failure, a lever allows for its manual activation to let you finish the job.



### Easy Maintenance

The tilt-up engine cowling, swing doors grease zerks, and well-thought-out mechanical design provide easy access to main components or parts requiring regular maintenance, such as:

- Oil and fuel filters
- Hydraulic oil tank
- Radiator
- Shear bolts
- Gear box



### Intuitive Operation

The color display screen provides the operator with a clear view of the blower's operating parameters. Optimized for all lighting conditions, the screen automatically adjusts and switches between day and night display modes. All functions are easily controlled with an intuitive joystick.

### The RPM48R is ideal for:

- Regional airports
- National park roads
- Mountain passes
- Mining sites

### RPM Tech Advantages

- Proven performance and service life
- Designed for extended periods of hard use
- Heavy-duty construction resists deformation
- Engine application audited by Caterpillar®
- Weather-resistant electrical components
- More than 55 years of experience designing and manufacturing snow-removal equipment

# Summary Technical Specifications – RPM48R

Up to 5,000 tons/hour capacity<sup>1</sup>

Casting: Up to 60 m (200 ft)<sup>1</sup>

Clears fresh, heavy, and hard-packed snow

## DIMENSIONS

- Cutting width: 3118 mm (122 ¾ in.)
- Overall height: 2794 mm (110 in.)
- Overall length: 3632 mm (143 in.) with fusion coupler and without steering guides
- Working height: 1495 mm (58 7/8 in.)
- Weight (approx.): 7711 kg (17 000 lb) approx. with full fuel tank, without coupler and options

## Ribbon

- One (1) 1220 mm (48 in.) diameter serrated ribbon made of two (2) replaceable flanged sections

## IMPELLER AND IMPELLER CASING

- 1220 mm (48 in.) diameter impeller
- Six (6) bolted concave blades
- Impeller casing:
  - Diameter: 1230 mm (48 ½ in.) approx..
  - Depth: 508 mm (20 in.)
  - Hydraulically activated with a worm gear
  - 135° rotation, with flat cast to the right
- Casting: Up to 60 m (200 ft) <sup>1</sup>

## ENGINE

- 388 kW (520 hp) C13 Caterpillar® Tier 4 Final, turbocharged Diesel engine
- Engine application is audited by Caterpillar®
- 1500 W block heater

## FUEL TANK

- 400 L (106 gal) steel tank
- Mounted on anti-vibration rubbers

## TRANSMISSION

- Belt transmission system with no oil bath
- One (1) oversized heavy-duty industrial gear box (impeller)
- One (1) gear box (ribbon)
- Two (2) drive shafts providing power to the ribbon and impeller
- Five (5) shear bolt protect the gear box and transmission shaft.

## CLUTCH

- Twin Disc clutch, actuated by cabin controlled hydraulic cylinder

## CHASSIS

- Fully welded, sturdy steel construction

## FIXED STEERING VANES

- Height: 2413 mm (95 in.)

## ELECTRICAL SYSTEM

- Sealed 12 V, 160 A alternator
- Tree (3) maintenance-free 31 3375 CCA batteries
- Oil pan heater
- Battery blanket warmer
- Four (4) lights mounted on the front of the snow blower

## CONTROLS AND INSTRUMENTATION

- Heavy-duty Sauer Danfoss PLUS+1 control system
- LCD color display screen, high day/night visibility
- Joystick with integrated functions and ignition key switch

## SKATES AND SCRAPER BLADES

- Twelve (12) abrasion resistant Trimay® skates
- Two (2) Trimay® reversible scraper blades

## OPTIONAL EQUIPMENT

- Wireless remote control system
- LCD color display screen
- Heaters connected to one common AC plug
- Arctic lubrication kit for constant temp. below -25°C (-13°F)
- Additional lighting
- Complete female quick coupler system
- Caster wheels
- Spot target / truck loading chute (featured below)



Tenco inc. reserves the right to modify or discontinue any design, specifications, characteristics, model, or accessory without notice.

<sup>1</sup> Depending on snow conditions

Contact your representative for full details

Tel: +1 450.687.3280

1 800.631.9297  
(North America)

info@rpmtechgroup.com

RPM Tech, a Trademark of Tenco Inc.,  
A Member of



Snow & Ice Team

